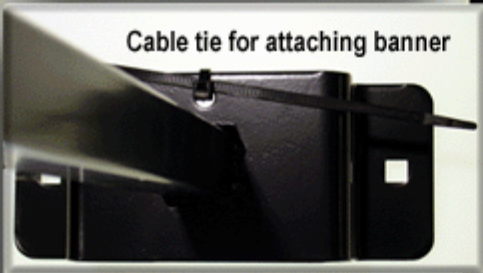


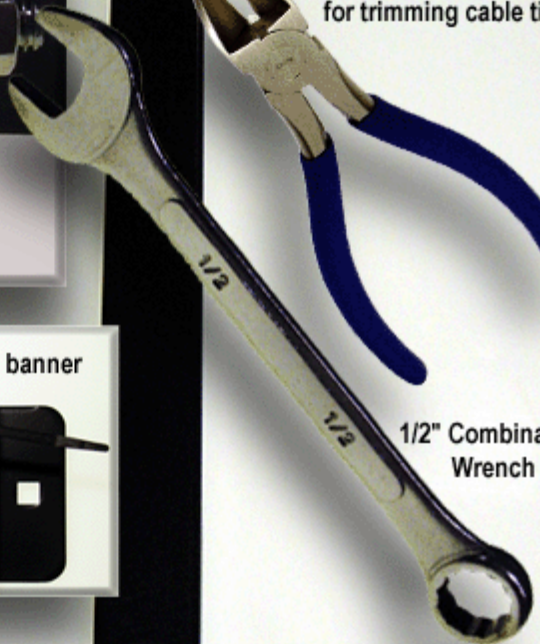
Carriage bolts plus double lock washers & nuts for rigity



Cable tie for attaching banner



6" Diagonal Cutter for trimming cable tie



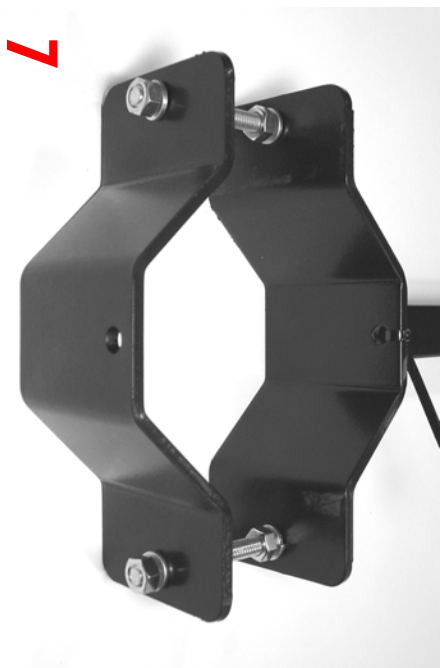
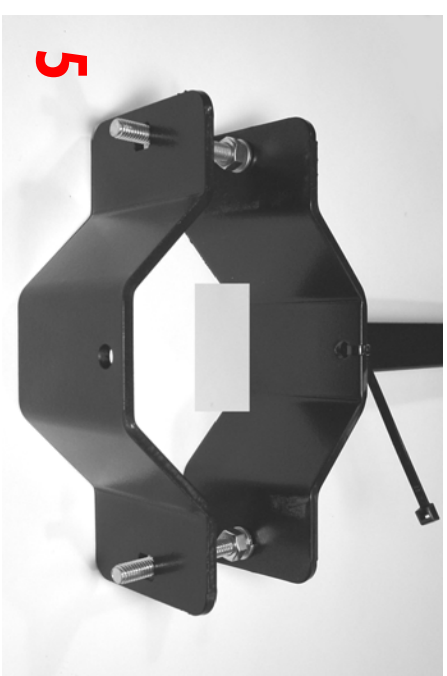
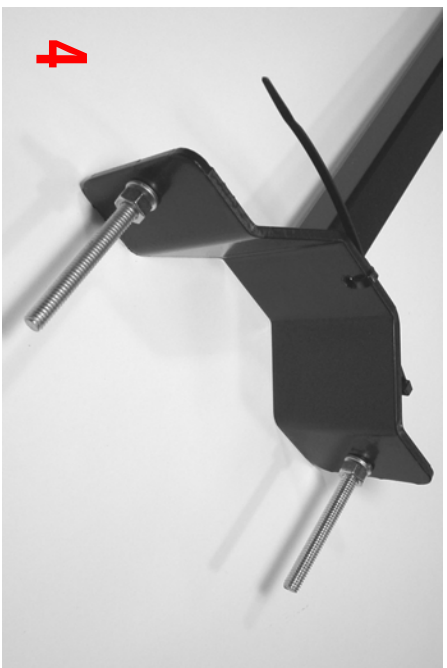
1/2" Combination Wrench



Baked epoxy powder coat finish

Smooth radius corners

# Assembly Instructions for STANDARD Brackets



1. Lay arm assembly on flat surface
2. Slip 5/16" carriage bolt through square hole, add washer+ nut
3. Hand tighten nut
4. Repeat for remaining bolt holes
5. Place arm assembly against pole, slip opposing arm assembly or baseplate over bolts
6. Add lock washers + nuts, hand tighten
7. Tighten outer nuts first
8. Tighten inner nuts last

## INSTALLING BANNER MAN POLE BANNER BRACKETS ON TWO SIDES OF METAL OR MASONRY LAMPPOST

1. (See *Assembly Instructions for Standard Brackets*)
2. Pre-assemble 2 arm assemblies as shown in Step 4. NOTE: the entire double set can be pre-assembled at the base of the lamppost, and then raised into position and tightened.
3. Use 2 ARM ASSEMBLIES, 2 bolts, 4 nuts, 2 washers + 2 cable ties for the *top set* and the same for the *bottom set*.
4. Position and hold the top arm assembly (with bolts sticking out) against the lamppost.
5. Slip the holes in the opposing arm assembly over the bolts.
6. Slip a lock washer onto each bolt.
7. Spin a nut hand tight onto each bolt.
8. Tighten the top bracket assembly using the outside nuts to hold it in place.
9. Tighten the inside nuts on the arm assembly to make the assembly rigid.
10. Slip the banner onto the top arm assembly.
11. Loop the black nylon 3/16" cable tie at the base of the arm assembly through the banner's top grommet. Snip off excess cable tie using a side cutter or scissors.
12. Slip the bottom arm assembly through the bottom banner pocket.
13. Position and hold the bottom arm assembly (with bolts sticking out) against the lamppost.
14. Slip the opposing arm assembly holes over the bolts, and let the arm assembly hang on the bolts.
15. Spin a nut hand tight on each of the bolts.
16. Pull down on the bottom assembly to tighten the banner, then tighten in place using the outside nuts.
17. If the banner is not uniformly tight or flat, the top arm assembly can be bent upward slightly to make the banner flatter. The baseplate metal is flexible enough to permit moderate adjustment without being weakened. To bend the top arm assembly upward, first loosen the bottom arm assembly nuts.
18. After re-tightening the top, pull down again on the bottom assembly to tighten the banner; then tighten the bottom arm assembly in place using the outside nuts.
19. Tighten the inside nuts to make the assembly rigid.
20. Loop the black nylon 3/16" cable tie at the base of the arm assembly through the banner's bottom grommet. Snip off excess cable tie using a side cutter or scissors. Stand back and admire your work, then move to the next banner.